

Service
Service
Service



Service Manual

TABLE OF CONTENTS

	Chapter
Technical Specification & Service Tips.....	1
Safety Instructions.....	2
Instruction for Use.....	3
Mechanical Instructions.....	4
Troubleshooting	5
Overall Block Diagram.....	6
Electrical Diagram.....	7
Service Part List.....	8
Revision List.....	9

©Copyright 2005 Philips Consumer Electronics B.V. Eindhoven, The Netherlands
All rights reserved. No part of this publication may be reproduced, stored in a retrieval system or transmitted, in any form or by any means, electronics, mechanical, photocopying, or otherwise without the prior permission of Philips

3141 785 32442

1.0 TECHNICAL SPECIFICATION

General

Dimensions (W x H x D):	158 x 210 x 39.5 mm
Bear Unit Weight:	0.79 kg +/- 5%
Power supply:	
Supply voltage	Input: 100~240V + / - 10% 50/60Hz 0.3A Output: DC 9V 1A
Supply Power consumption (AC adaptor 100/240VAC)	9W + 10%
Operating Temperature	0 – 45degC
Video System	NTSC / PAL
Frequency response	20-20kHz +/-1dB
THD 20-20kHz (%):	< /=3%
Dynamic range 1kHz	> /=80dB
Signal/Noise ratio:	> /=80dB
Channel Separation 1kHz	> =80dB
Channel Balance 1kHz	< 2dB

Playback disc type:	DVD, Picture-CD, SVCD, Video CD, MP3-CD, CD-R/CD-RW, WMA-CD, DVD-R, DVD-RW, DVD+R, DVD+RW
Video Playback Format:	DVD / VCD / SVCD / CD / JPEG
Audio Playback Format:	CD/MP3, MP3-DVD, DVD
Disc Diameter	12cm

Pixel specification

Max. 0 bright-dot & max. 3 dark-dots

Current consumption

Playback time	
Capacity--- Refer to battery spec	≥1600mAH
Battery discharge cut-off current	40mA
Max.battery charge current(continue charge) of DCP850 & DCP750	400-500
Charging time	2 +/- 0.5H

Headphone out (headphone output load 2x16 ohm)

Maximum output power:	1.5mW
Frequency response:	+/-3dB
SNR (A-wght):	>70dB
THD (0.2-20kHz):	3%
Left-Right Channel Separation:	> /=50dB
Left-Right Channel Balance:	< /=1dB

Supported disc type

Video Playback Formats:



Audio Playback Formats:



Factory Service Mode (FSM)

To check the software version and change region code of your DVD Portable

1. Power ON the DVD player and open the DVD door
2. Press the "SETUP" button on remote control, then select the "Preference MENU"
3. Press the remote button in the sequence as 9 -> 6 -> 5 -> 3
4. The LCD display showed the existing region code. Press ▲ (navigation up) or ▼ (navigation down) repeatedly to select the number from 0 to 6.
5. Refer below table for your region code setting

Region Code	Region
1	USA
2	EUROPE
3	ASIA PACIFIC
4	AUSTRALIA, NEW ZEALAND, LATAM
5	RUSSIA, INDIA
6	CHINA

Select "0" setting = Region Free (confidential)

1.0 TECHNICAL SPECIFICATION

Procedure on how to upgrade the software of the DVD Portable

For the best performance of your DVD Portable. Check www.philips.com/support for latest software upgrades available.

A) By CD-ROM

1. Download the "PHILIPS.BIN" file from the Philips support site
2. Unzip the file and then burn it into a CD-ROM to make a disc for upgrade
3. CD-ROM disc name must be "PHILIPS" (otherwise it will not be recognized as a disc for upgrade)
4. Power on the Portable DVD Player with AC/DC adaptor
5. Play CD-ROM for firmware upgrade

Warning: Do not unplug the AC adaptor during firmware upgrade to prevent flash corrupt of the set!!

6. Once upgrade is completed, the player will restart automatically and observed PHILIPS LOGO on the screen.
7. Open the DVD door to remove the disc

1.0 TECHNICAL SPECIFICATION

Service Policy on PCBA of PET722 / PET726

Type	/05	/12	/98
Main PCBA	MLR	MLR	MLR
TFT PCBA	MLR	MLR	MLR
KEY PCBA	MLR	MLR	MLR
BATTERY PCBA	MLR	MLR	MLR

MLR = module swap

2.0 SAFETY INSTRUCTIONS

GB WARNING

All ICs and many other semi-conductors are susceptible to electrostatic discharges (ESD). Careless handling during repair can reduce life drastically. When repairing, make sure that you are connected with the same potential as the mass of the set via a wrist wrap with resistance. Keep components and tools also at this potential.

F ATTENTION

Tous les IC et beaucoup d'autres semi-conducteurs sont sensibles aux décharges statiques (ESD). Leur longévité pourrait être considérablement écourtée par le fait qu'aucune précaution n'est prise à leur manipulation. Lors de réparations, s'assurer de bien être relié au même potentiel que la masse de l'appareil et enfilez le bracelet serti d'une résistance de sécurité. Veiller à ce que les composants ainsi que les outils que l'on utilise soient également à ce potentiel.

D WARNUNG

Alle ICs und viele andere Halbleiter sind empfindlich gegenüber elektrostatischen Entladungen (ESD). Unsorgfältige Behandlung im Reparaturfall kann die Lebensdauer drastisch reduzieren. Veranlassen Sie, dass Sie im Reparaturfall über ein Pulsarmband mit Widerstand verbunden sind mit dem gleichen Potential wie die Masse des Gerätes. Bauteile und Hilfsmittel auch auf dieses gleiche Potential halten.

ESD



NL WAARSCHUWING

Alle IC's en vele andere halfgeleiders zijn gevoelig voor electrostatische ontladingen (ESD). Onzorgvuldig behandelen tijdens reparatie kan de levensduur drastisch doen verminderen. Zorg ervoor dat u tijdens reparatie via een polsband met weerstand verbonden bent met hetzelfde potentiaal als de massa van het apparaat. Houd componenten en hulpmiddelen ook op ditzelfde potentiaal.

I AVVERTIMENTO

Tutti IC e parecchi semi-conduttori sono sensibili alle scariche statiche (ESD). La loro longevità potrebbe essere fortemente ridotta in caso di non osservazione della più grande cauzione alla loro manipolazione. Durante le riparazioni occorre quindi essere collegato allo stesso potenziale che quello della massa dell'apparecchio tramite un braccialetto a resistenza. Assicurarsi che i componenti e anche gli utensili con quali si lavora siano anche a questo potenziale.

GB

Safety regulations require that the set be restored to its original condition and that parts which are identical with those specified, be used.

"Pour votre sécurité, ces documents doivent être utilisés par des spécialistes agréés, seuls habilités à réparer votre appareil en panne".

NL

Veiligheidsbepalingen vereisen, dat het apparaat bij reparatie in zijn oorspronkelijke toestand wordt teruggebracht en dat onderdelen, identiek aan de gespecificeerde, worden toegepast.

F

Les normes de sécurité exigent que l'appareil soit remis à l'état d'origine et que soient utilisés les pièces de rechange identiques à celles spécifiées.

D

Bei jeder Reparatur sind die geltenden Sicherheitsvorschriften zu beachten. Der Originalzustand des Geräts darf nicht verändert werden; für Reparaturen sind Original-Ersatzteile zu verwenden.

I

Le norme di sicurezza esigono che l'apparecchio venga rimesso nelle condizioni originali e che siano utilizzati i pezzi di ricambio identici a quelli specificati.

"After servicing and before returning set to customer perform a leakage current measurement test from all exposed metal parts to earth ground to assure no shock hazard exist. The leakage current must not exceed 0.5mA."



GB Warning !

Invisible laser radiation when open.
Avoid direct exposure to beam.

S Varning !

Osynlig laserstrålning när apparaten är öppnad och spärrar är urkopplad. Betrakta ej strålen.

SF Varoitus !

Avatussa laitteessa ja suojalukituksen ohitettaessa olet alltiina näkymättömälle laserisäteilylle. Älä katso säteeseen!

DK Advarsel !

Usynlig laserstråling ved åbning når sikkerhedsafbrydere er ude af funktion. Undgå udsættelse for stråling.

2.1 ESD PROTECTION

- レンズには絶対に触れないでください。
- DO NOT TOUCH THE LENS.
- LINSE NICHT BRÜHREN.
- NE PAS TOUCHER LA LENTILLE.

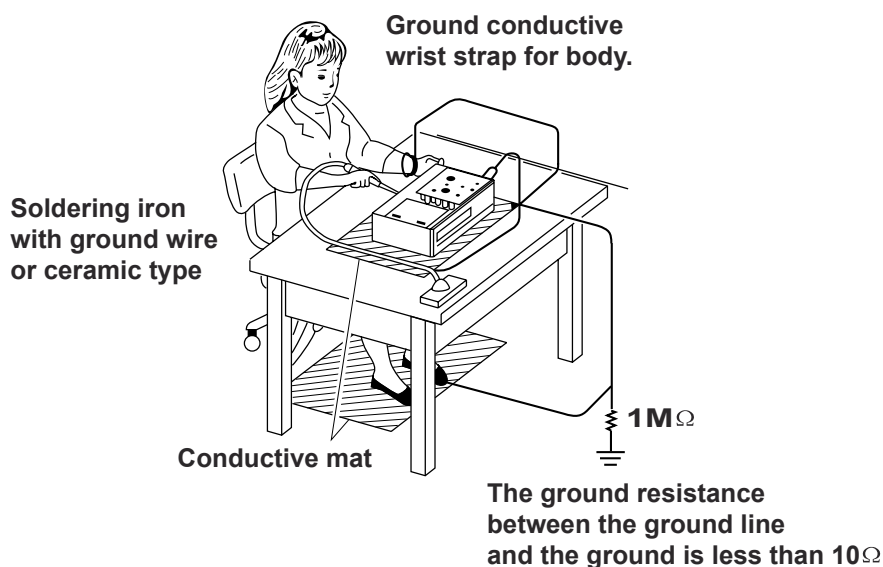
When the power supply is being turned on, you may not remove this laser cautions label. If it removes, radiation of laser may be received.

PREPARATION OF SERVICING

Pickup Head consists of a laser diode that is very susceptible to external static electricity.

Although it operates properly after replacement, if it was subject to electrostatic discharge during replacement, its life might be shortened. When replacing, use a conductive mat, soldering iron with ground wire, etc. to protect the laser diode from damage by static electricity.

And also, the LSI and IC are same as above.



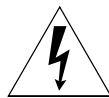
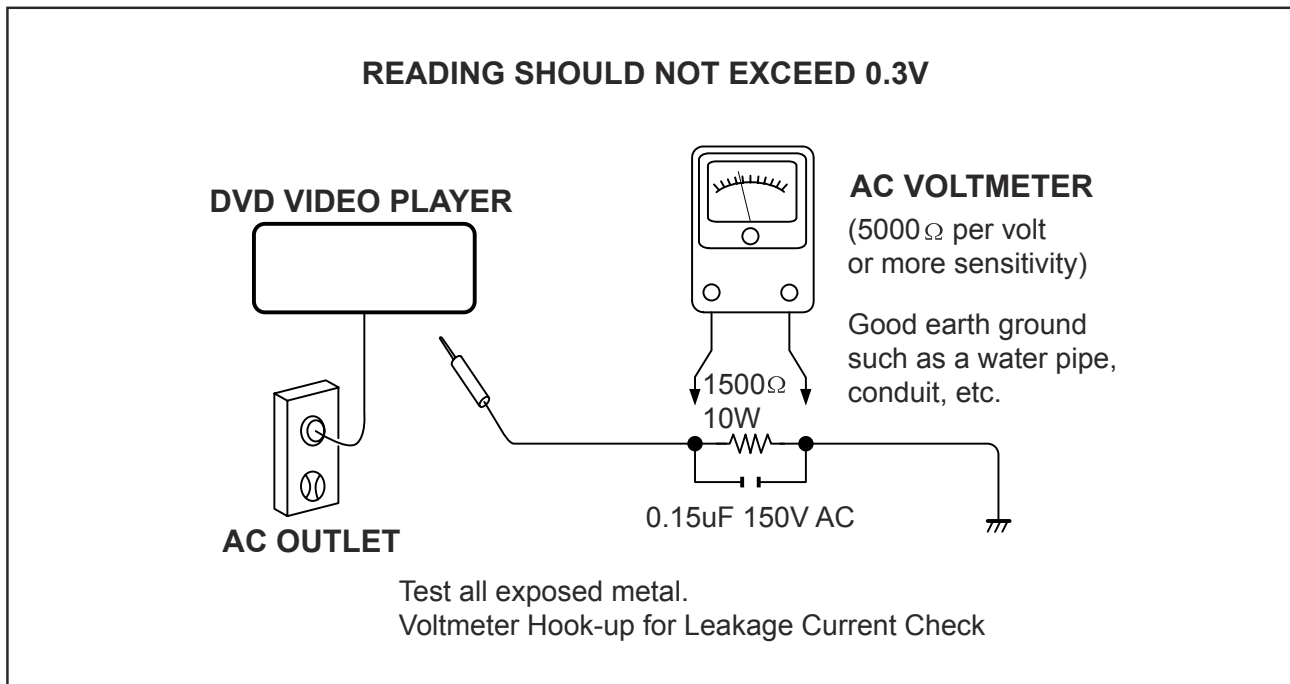
SAFTY NOTICE

SAFTY PRECAUTIONS

LEAKAGE CURRENT CHECK

Plug the AC line cord directly into a 120V AC outlet (do not use an isolation transformer for this check). Use an AC voltmeter, having 5000Ω per volt or more sensitivity. Connect a 1500Ω 10W resistor, paralleled by a $0.15\mu\text{F}$ 150V AC capacitor between a known good earth ground (water pipe, conduit, etc.) and all exposed metal parts of cabinet (antennas, handle bracket, metal cabinet screwheads, metal overlays, control shafts, etc.).

Measure the AC voltage across the 1500Ω resistor. The test must be conducted with the AC switch on and then repeated with the AC switch off. The AC voltage indicated by the meter may not exceed 0.3V. A reading exceeding 0.3V indicates that a dangerous potential exists, the fault must be located and corrected. Repeat the above test with the DVD VIDEO PLAYER power plug reversed. NEVER RETURN A DVD VIDEO PLAYER TO THE CUSTOMER WITHOUT TAKING NECESSARY CORRECTIVE ACTION.



The lightning flash with arrowhead symbol, within an equilateral triangle, is intended to alert the user to the presence of uninsulated "dangerous voltage" within the product's enclosure that may be of sufficient magnitude to constitute a risk of electric shock to persons.



The exclamation point within an equilateral triangle is intended to alert the user to the presence of important operating and maintenance (servicing) instructions in the literature accompanying the appliance.

2.2 SAFETY INSTRUCTIONS

Battery Handling Guideline

Since the battery is packed in soft package, to ensure its better performance, it's very important to carefully handle the battery

2.2.1 Soft Aluminium foil

The soft aluminum packing foil is very easily damaged by sharp edge parts such as Ni-tabs, pins and needles.

- Don't strike battery with any sharp edge parts
- Trim your nail or wear glove before taking battery
- Clean worktable to make sure no any sharp particle



2.2.2 Sealed edge

Sealing edge is very flimsy

- Don't bend or fold sealing edge



2.2.3 Folding edge

The folding edge is form in battery process and passed all hermetic test.

- Don't open or deform folding edge



2.2.4 Tabs

The battery tabs are not so stubborn especially for aluminum tab.

- Don't bend tab



2.2.5 Mechanical shock

- Don't Fall, hit, bend battery body



2.2.6 Short

Short terminals of battery is strictly prohibited, it may damage battery.

3.0 INSTRUCTION FOR USE

Main unit controls (see figure 1)

- ① ▲, ▼, ◀, ▶Navigate in a menu.
-(◀ / ▶) Press and hold to search backward/forward in a disc at different speeds.
-(◀ / ▶) Press briefly to skip to previous/next chapter, track or title.
- OK**Start or interrupt playback.
-Confirm a selection.
-Power indicator.

Left of player (see figure 1)

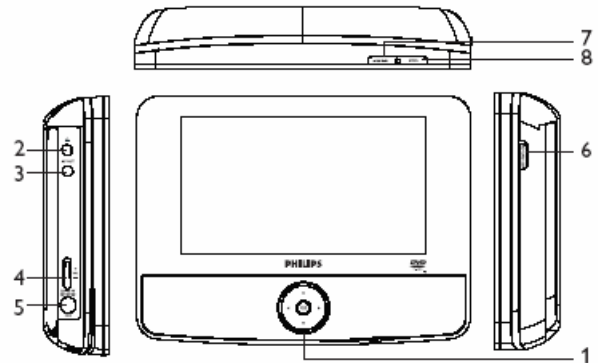
- ② 🎧Headphone jack.
- ③ **AV OUT**Audio/Video output jack.
- ④ **VOL +/-**Volume control.
- ⑤ **DC 9V**Power supply socket.
- CHG**Charge indicator.

Right of player (see figure 1)

- ⑥ **OFF POWER ON** ...Switch the power on/off.

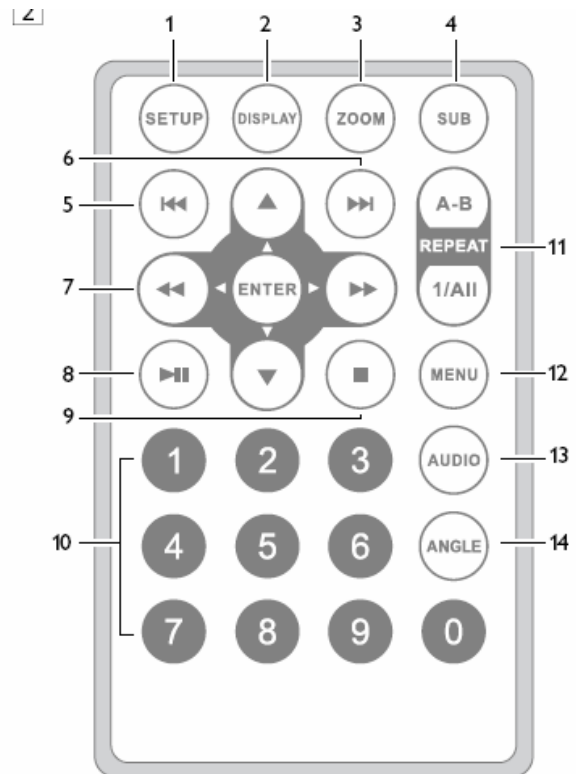
Top of player (see figure 1)

- ⑦ **AV OUT/DVD**Switch between DVD and AV OUT modes.
- ⑧ **MENU**.....Display the MENU page.



Remote controls (see figure 2)

- ① **SETUP**Enter or exit the system menu.
- ② **DISPLAY**Display information on TFT during playback.
- ③ **ZOOM**.....Enlarge or reduce a picture or active image on the TFT.
- ④ **SUB**Select a subtitle language.
- ⑤ ◀◀Skip to the previous chapter, track or title.
- ⑥ ▶▶Skip to the next chapter, track or title.
- ⑦ ▲, ▼, ◀, ▶Navigate in a menu.
-(◀◀ / ▶▶) search backward/forward in a disc at different speeds.
- ENTER**Confirm a selection.
- ⑧ ▶||Start or interrupt playback.
- ⑨ ■Stop playback
- ⑩ 0-9Numeric Keypad
- ⑪ **REPEAT 1/ALL**.....Repeat a chapter/track/title.
- A-B**.....Repeat playback of a specific section on a disc.
- ⑫ **MENU**.....Enter or exit the disc contents menu.
- ⑬ **AUDIO**Select an audio language when playing a DVD disc or select an audio mode (Stereo, Mono-Left or Mono-Right) when playing a VCD/CD disc.
- ⑭ **ANGLE**.....Select DVD camera angle



CAUTION

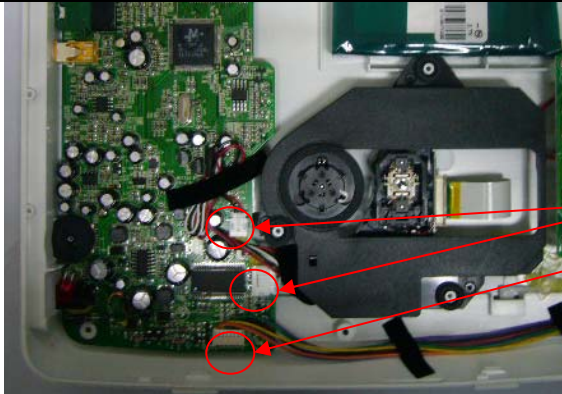
Use of controls or adjustments or performance of procedures other than herein may result in hazardous radiation exposure or other unsafe operation.

4.0 MECHANICAL INSTRUCTION

Disassembly Procedure



1. Remove 5pcs of screws on the side of bottom cabinet (include the one behind plastic stand).
2. Slip the TFT section, then you can open the bottom cabinet. Be careful of the FFC which connect with main board and TFT board.



2. Open the bottom cabinet, up-plug all the wire connector from main board (include the FFC connect with TFT board and main board),

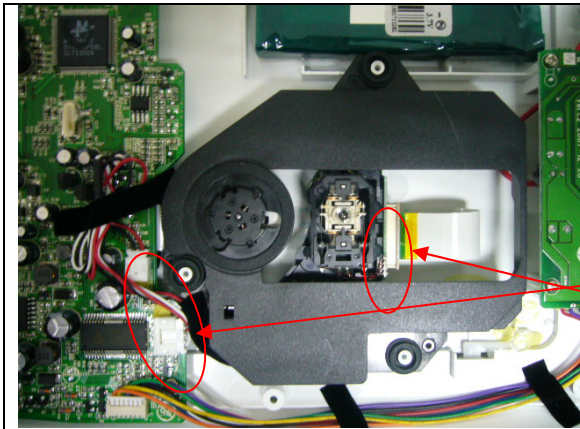
The wire connector are for:

- DVD loader,
- Battery board.



Remove all the screws on the main board (3pcs), and then take the main board from bottom cabinet.

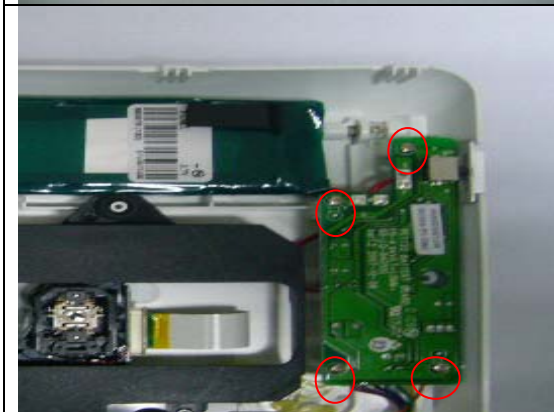
4.0 MECHANICAL INSTRUCTION



3. Up-plug the FFC from DVD driver, then you can take out the DVD Driver.



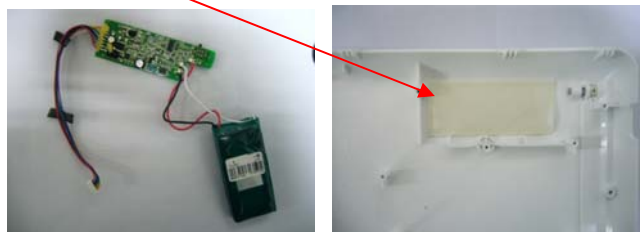
4. Remove the flex FFC on the bottom side behind the black flannel.



5. Remove 4pcs of screws on the battery board.

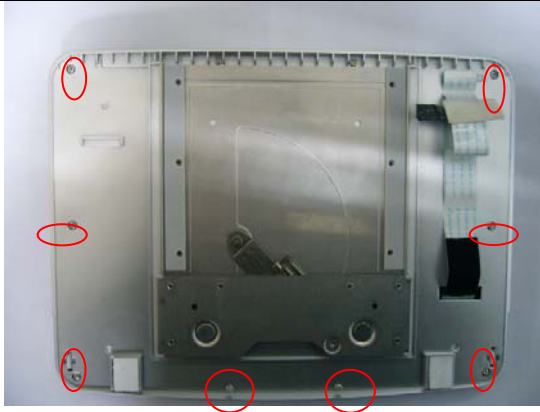
Then take out the battery together with the battery board.

Note: the battery was fixed by two side tape!



Remove 6pcs of screws on the DVD top cabinet, you can separate the DVD top cabinet and TFT back cabinet.

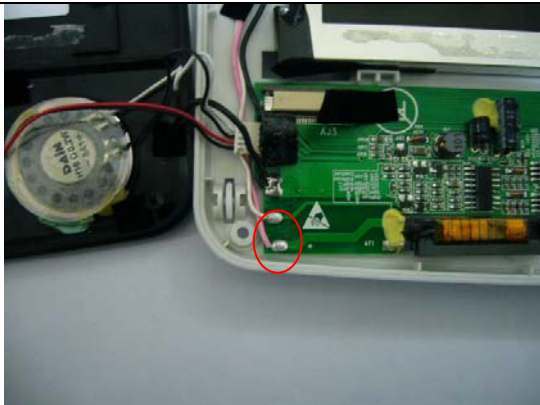
4.0 MECHANICAL INSTRUCTION



6. Remove 8pcs of screws on the TFT back cabinet. Then you can open the display frame, carefully! (There is a catch as shown in the pictures)



7. To remove the hinge, remove the screws on the hinge.



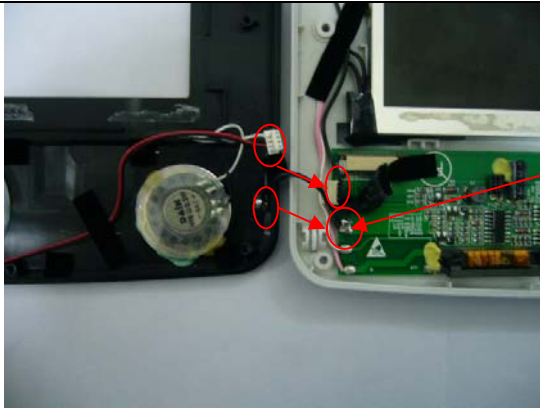
8. To remove the TFT, de-soldering the wire connected between panel and TFT board first; After this, up-plug the FFC from TFT board which behind the black flannel; Then you can separate the panel.



Be aware that the panel is fixed by 4pcs two side tape



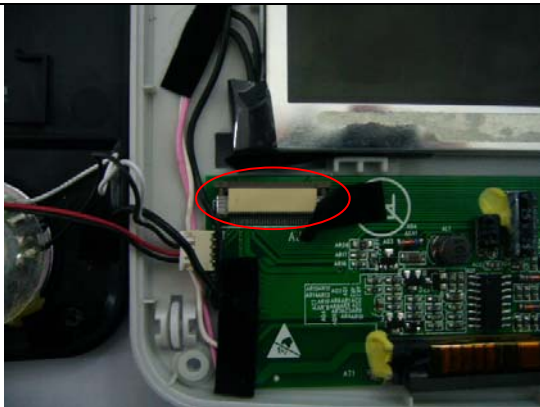
4.0 MECHANICAL INSTRUCTION



9. up-plug the speaker line from TFT board, and don't forget de-soldering the black ground wire behind black flannel.



At last you can take out the driver board from cabinet using eradicator.

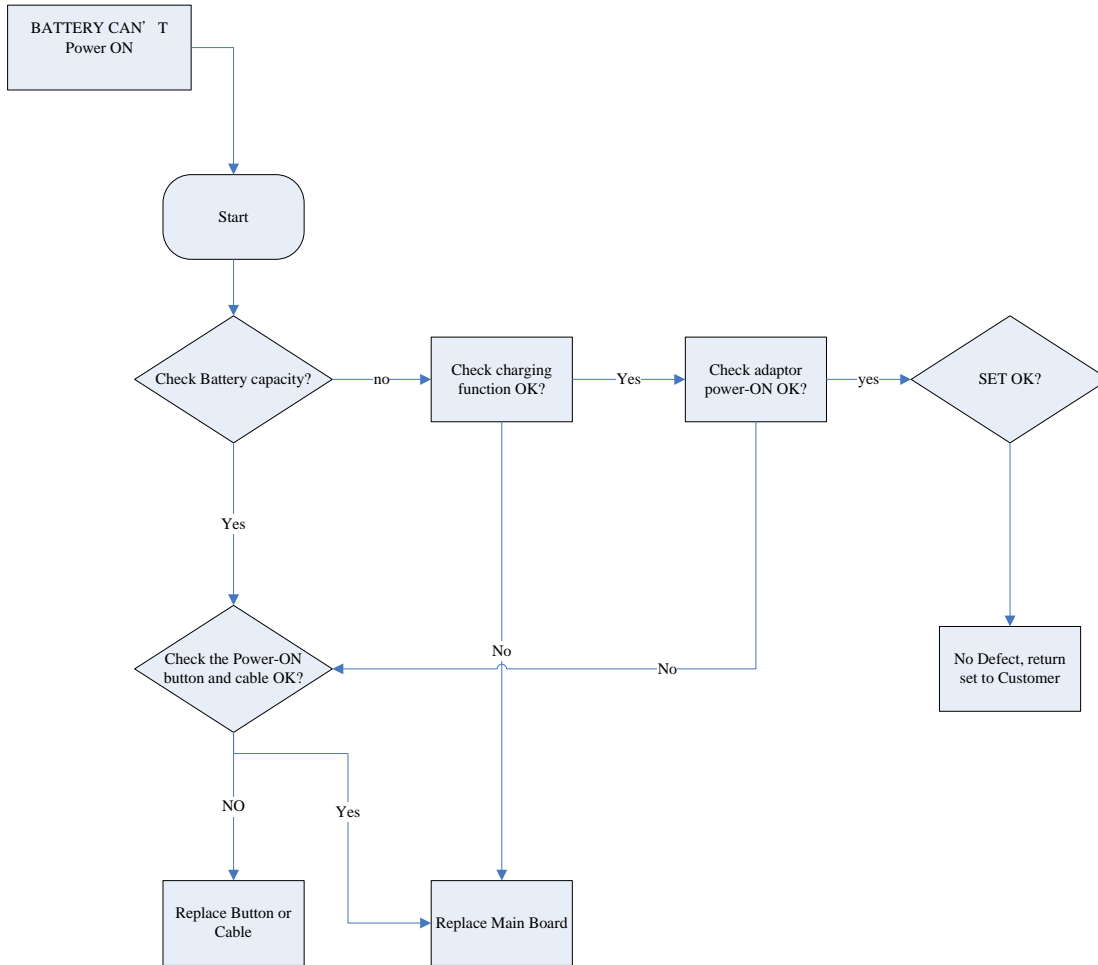


10. Don't forget to up-plug the FFC which connect with TFT board and main board



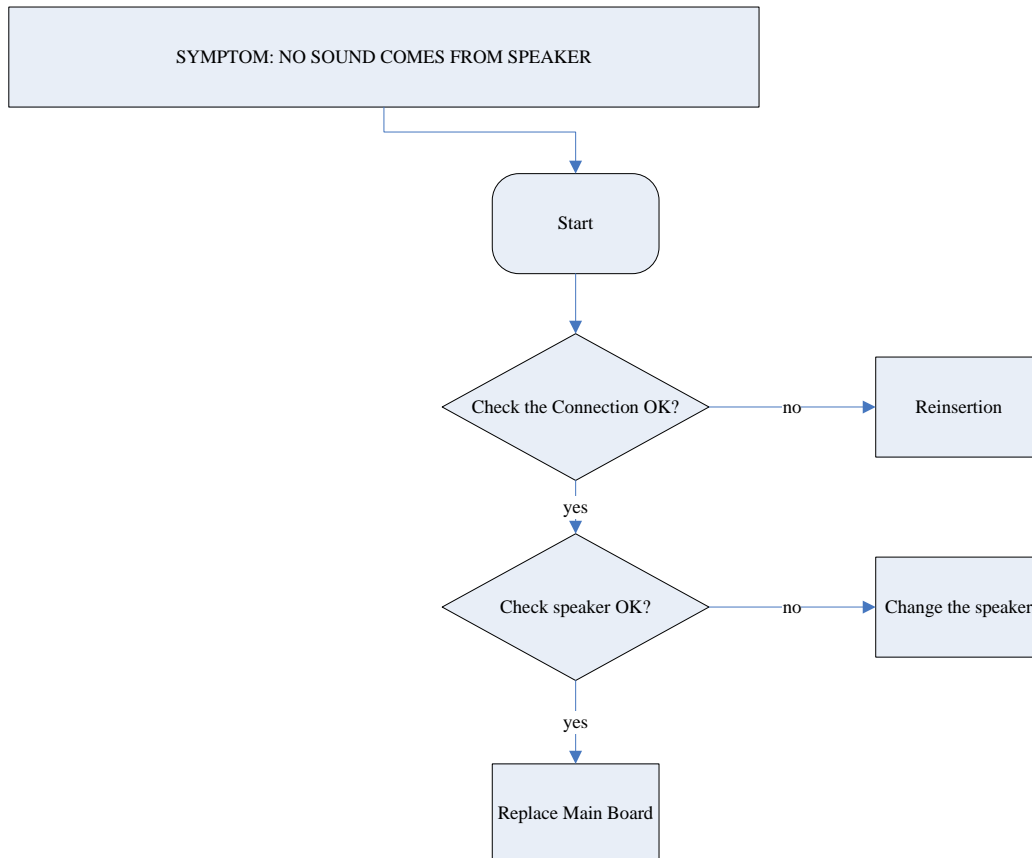
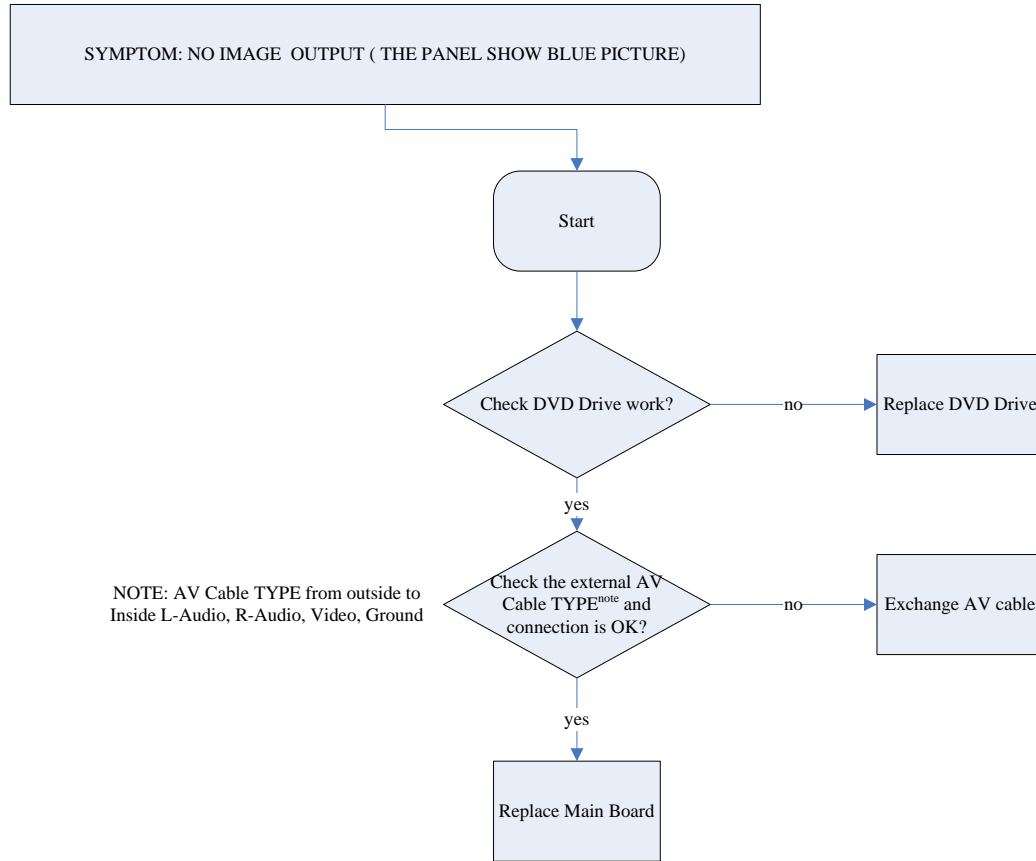
5.0 TROUBLESHOOTING

SYMPTOM: BATTERY NO POWER



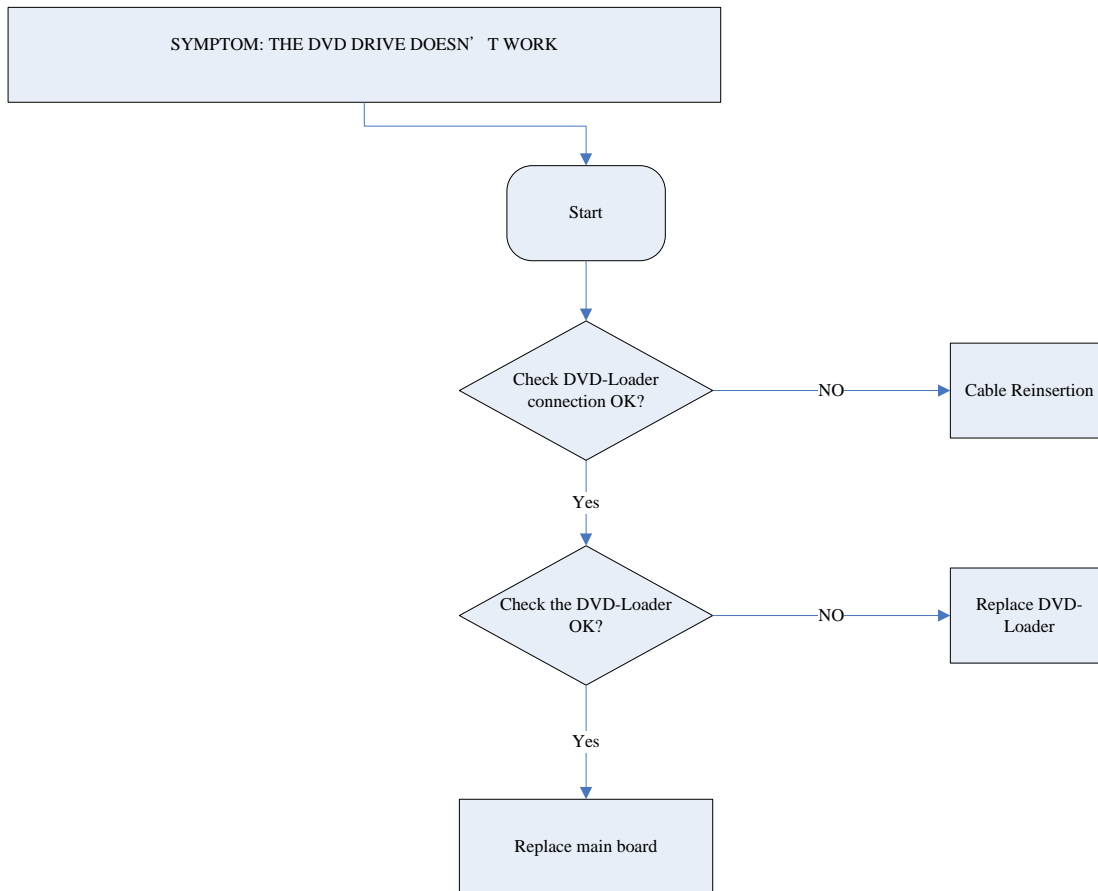
5.0 TROUBLESHOOTING

SYMPTOM: NO IMAGE / NO SOUND



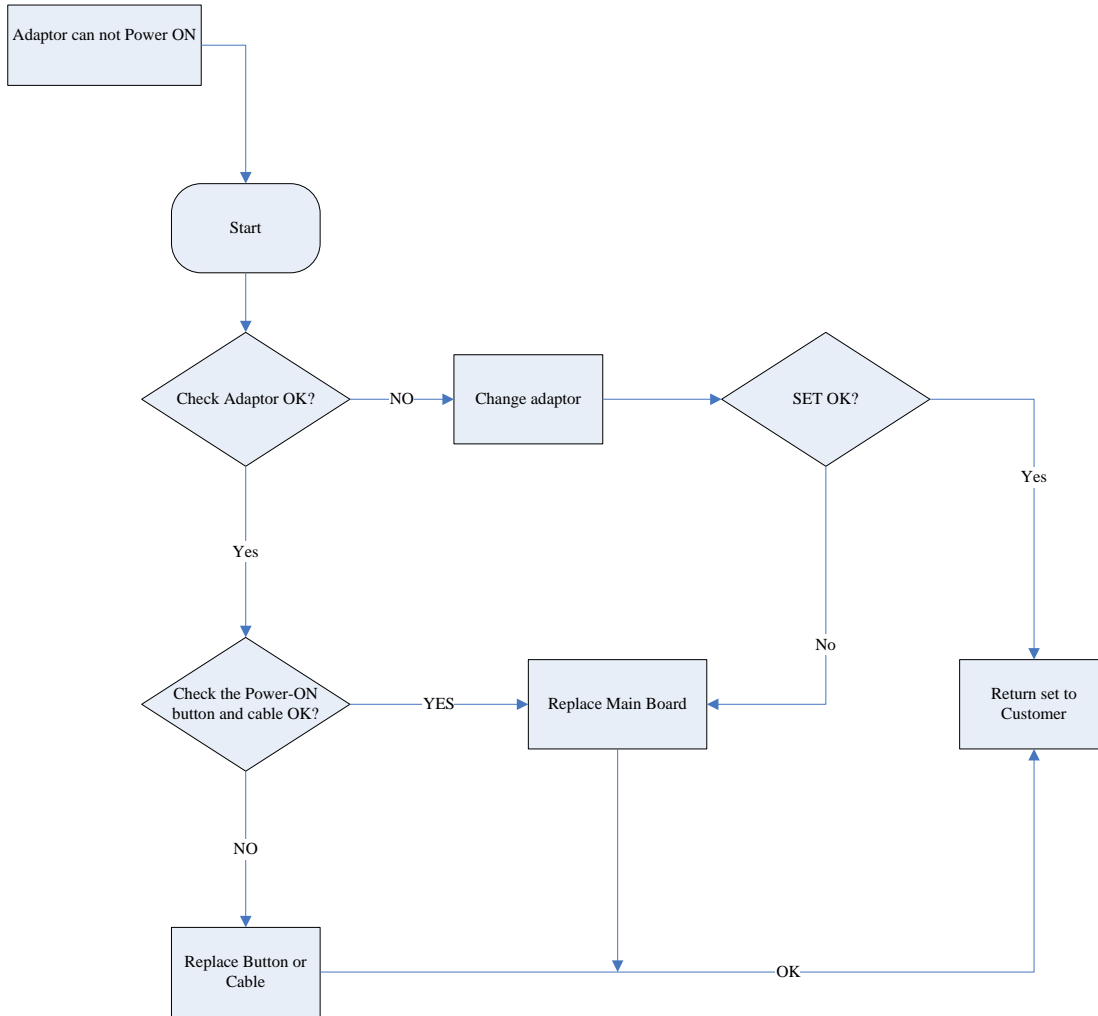
5.0 TROUBLESHOOTING

SYMPTOM: THE DVD DRIVE DOES NOT WORK



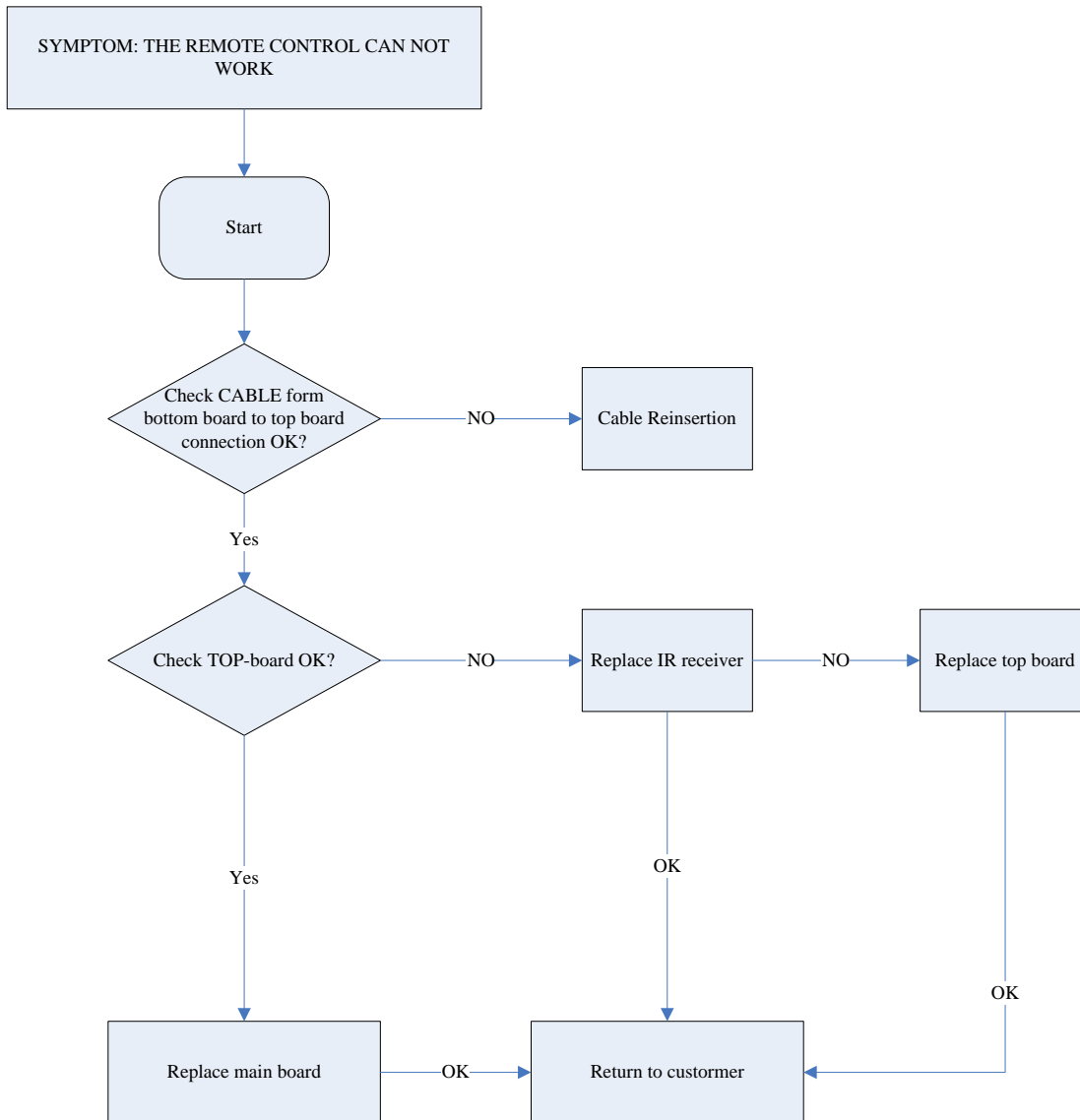
5.0 TROUBLESHOOTING

SYMPTOM: ADAPTOR CANNOT POWER ON



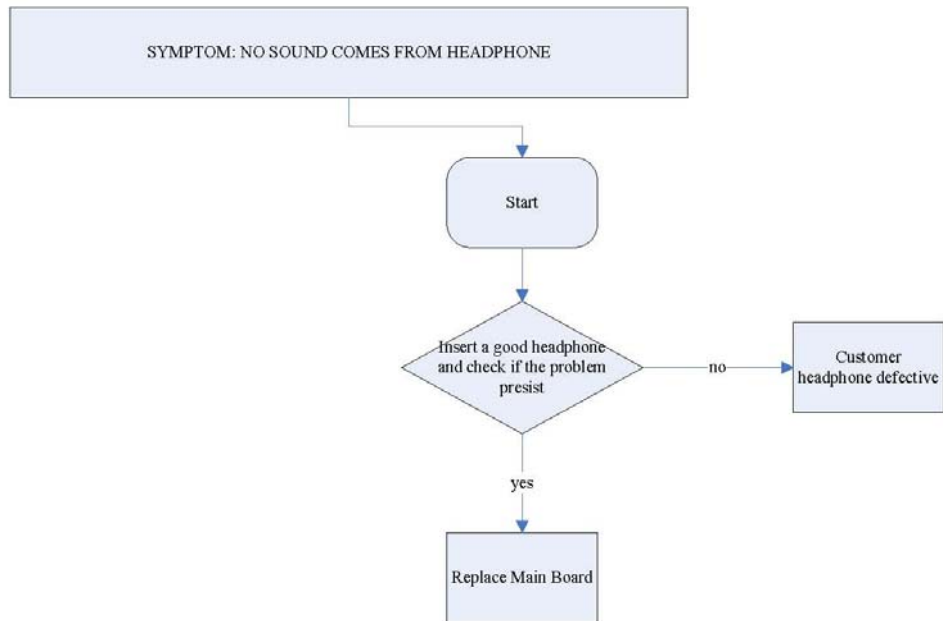
5.0 TROUBLESHOOTING

SYMPTOM: REMOTE CONTROL CANNOT WORK



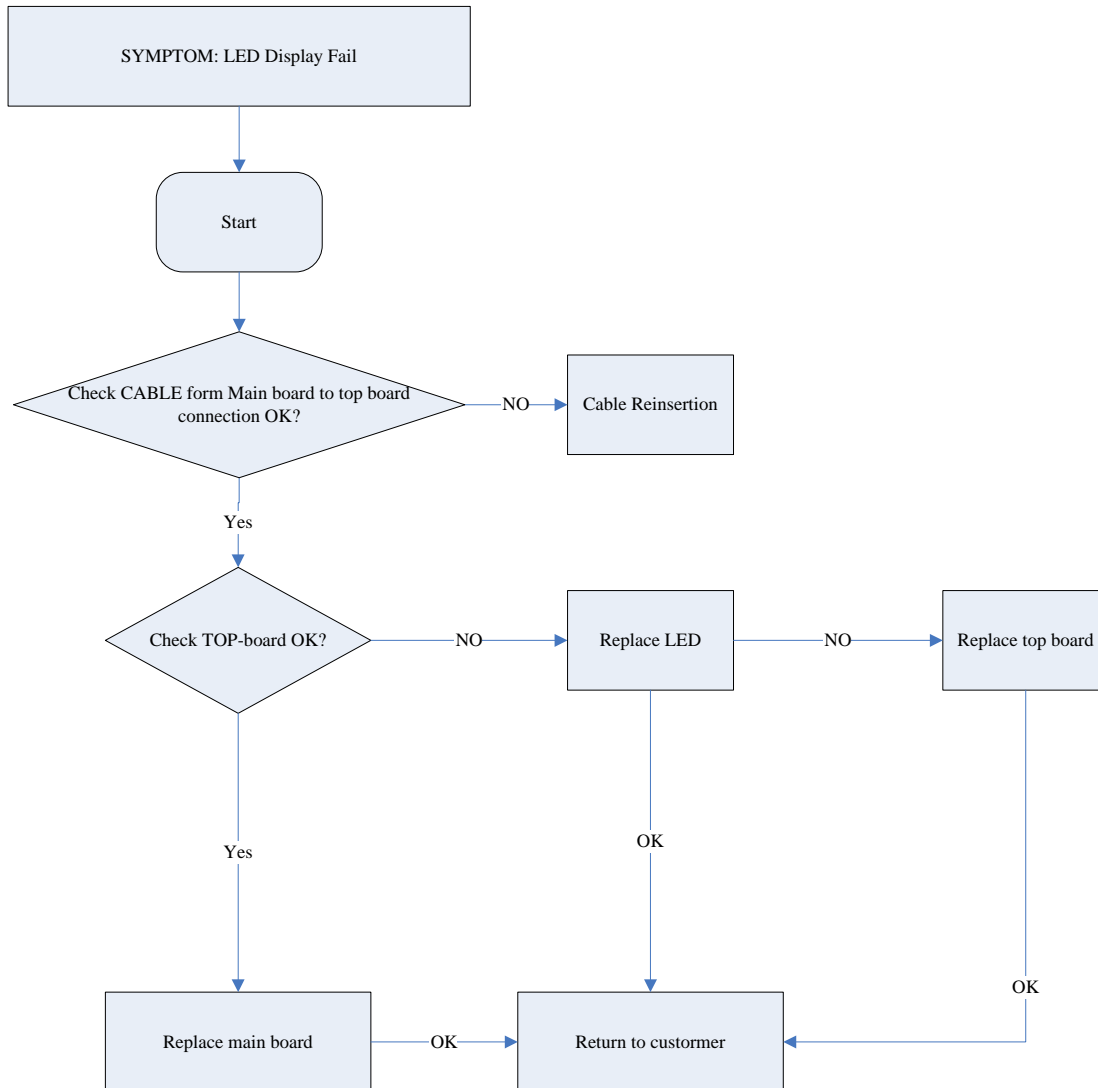
5.0 TROUBLESHOOTING

SYMPTOM: NO SOUND FROM HEADPHONE



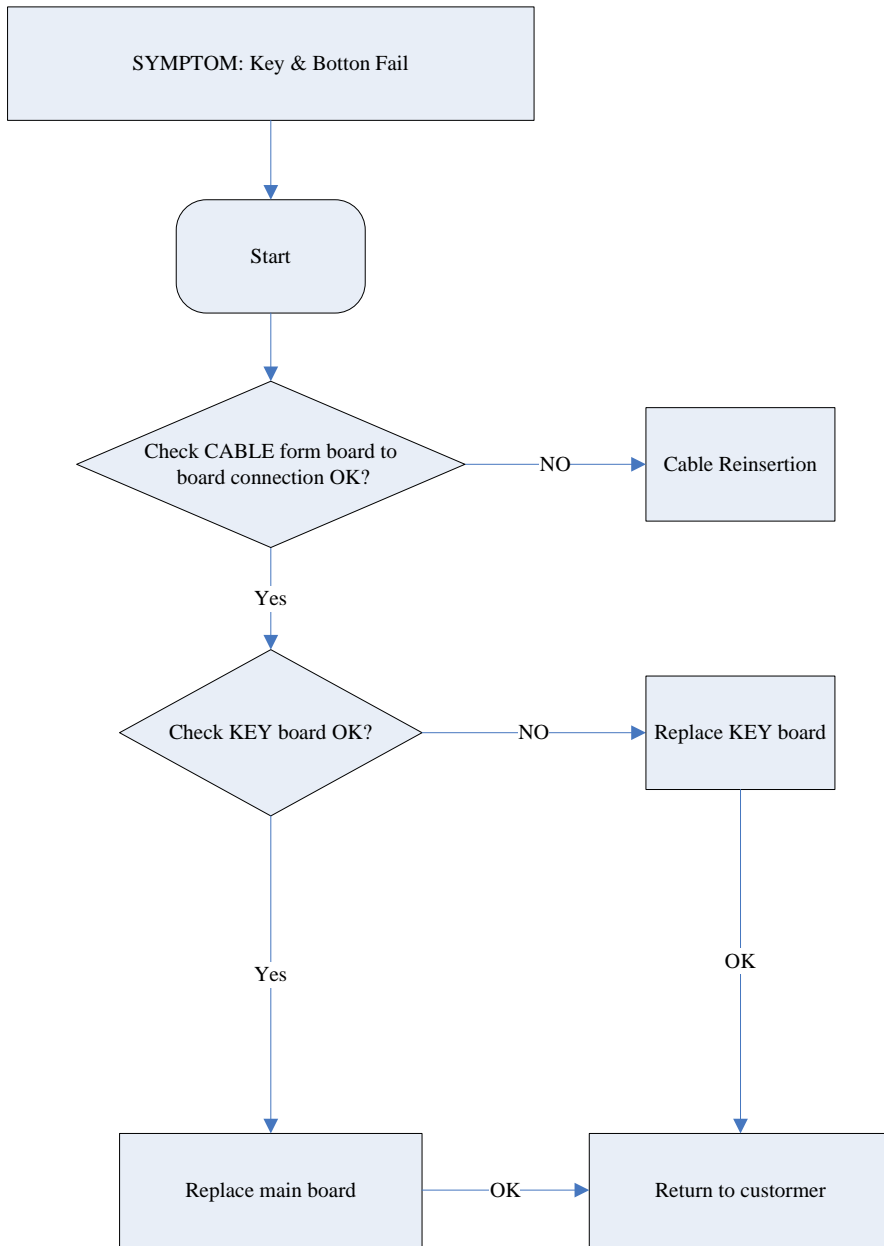
5.0 TROUBLESHOOTING

SYMPTOM: LED DISPLAY FAILURE

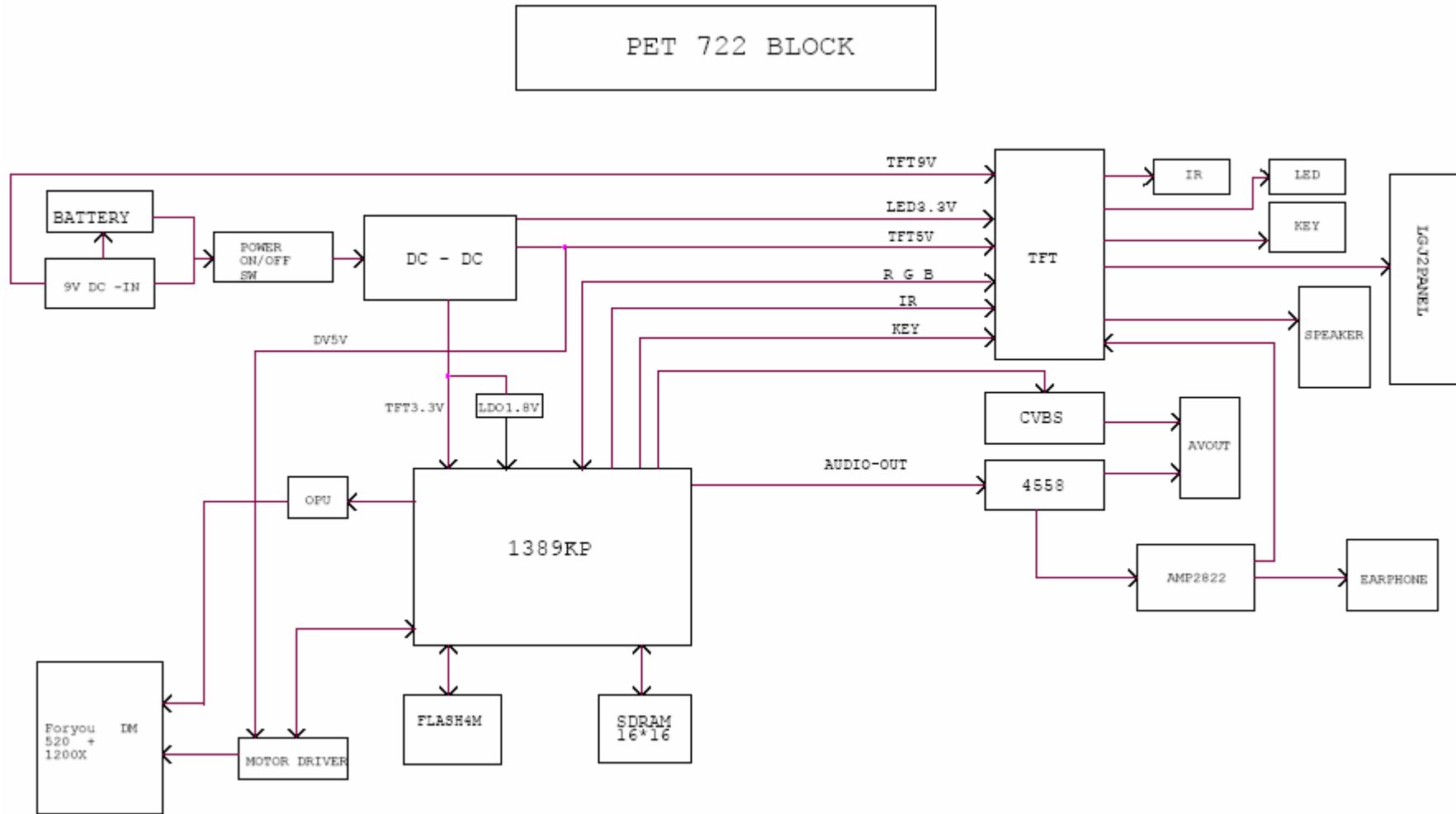


5.0 TROUBLESHOOTING

SYMPTOM: KEY & BOTTON FAILURE



6.0 BLOCK DIAGRAM



7.0 ELECTRICAL DIAGRAM

The diagrams listed on the following pages:

Part 1 – Schematic diagram of MAIN BOARD (1 page)

Part 2 – Schematic diagram of TFT DRIVER BOARD (1 page)

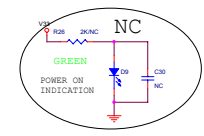
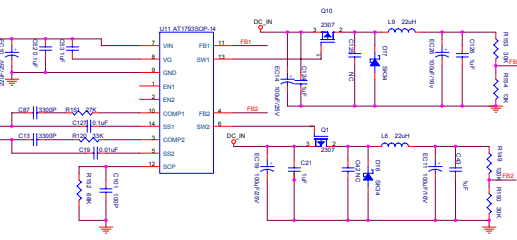
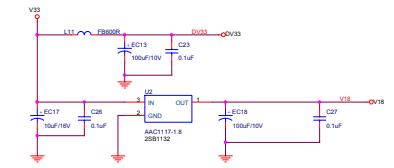
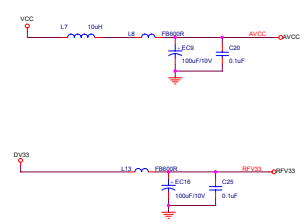
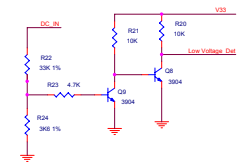
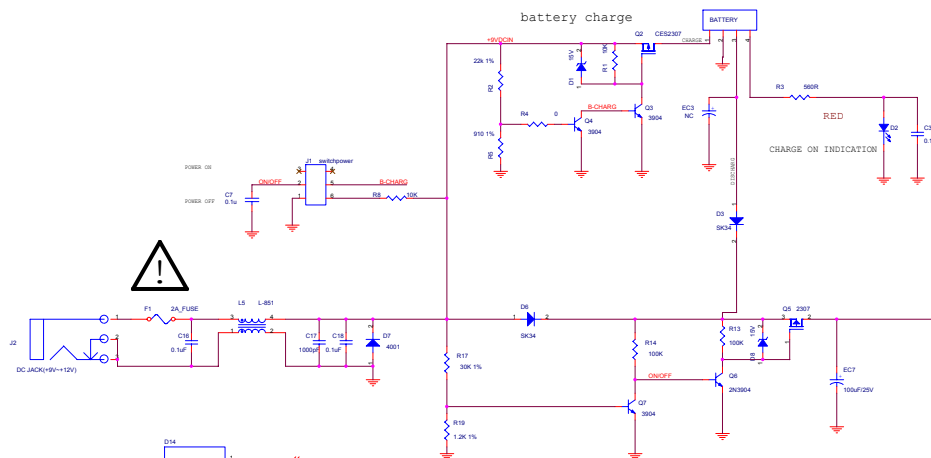
Part 3 – Schematic diagram of BATTERY BOARD (1 page)

Part 4 – PCBA layout diagram of MAIN BOARD (2 page – top and bottom side)

Part 5 – PCBA layout diagram of TFT DRIVER BOARD (2 page – top and bottom side)

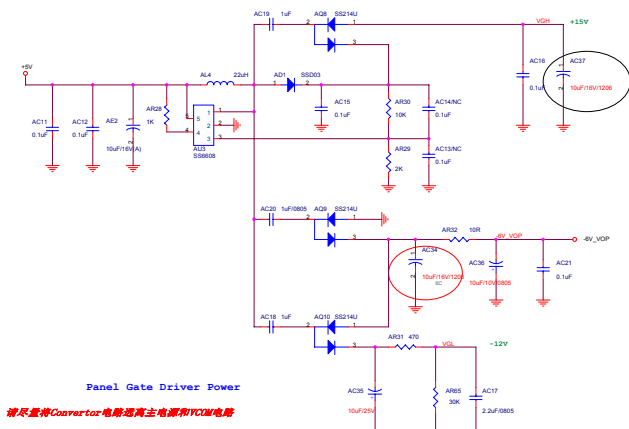
Part 6 – PCBA layout diagram of BATTERY BOARD (2 page – top and bottom side)

battery charge



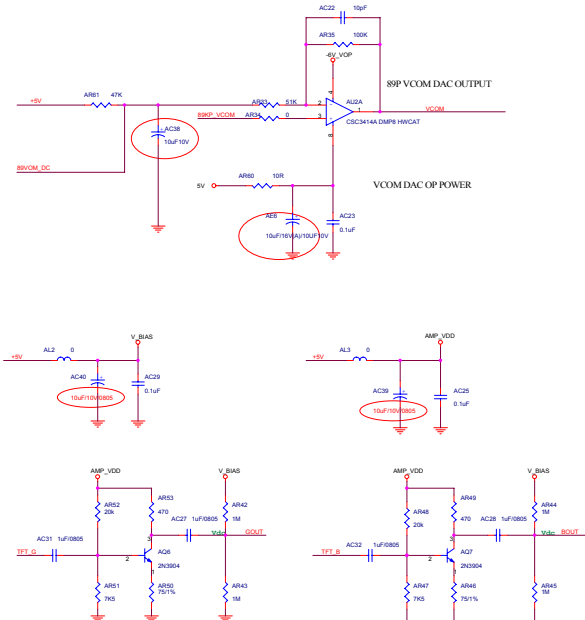
POWER

VCC1	CC13	4
VCC2	CC14	4
VCC3	CC15	2,3
VCC4	CC16	2,3
VCC5	CC17	2
VCC6	CC18	2
VCC7	CC19	2
VCC8	CC20	2
VCC9	CC21	2
VCC10	CC22	2
VCC11	CC23	2
VCC12	CC24	2
VCC13	CC25	2
VCC14	CC26	2
VCC15	CC27	2
VCC16	CC28	2
VCC17	CC29	2
VCC18	CC30	2
VCC19	CC31	2
VCC20	CC32	2
VCC21	CC33	2
VCC22	CC34	2
VCC23	CC35	2
VCC24	CC36	2
VCC25	CC37	2
VCC26	CC38	2
VCC27	CC39	2
VCC28	CC40	2
VCC29	CC41	2
VCC30	CC42	2
VCC31	CC43	2
VCC32	CC44	2
VCC33	CC45	2
VCC34	CC46	2
VCC35	CC47	2
VCC36	CC48	2
VCC37	CC49	2
VCC38	CC50	2
VCC39	CC51	2
VCC40	CC52	2
VCC41	CC53	2
VCC42	CC54	2
VCC43	CC55	2
VCC44	CC56	2
VCC45	CC57	2
VCC46	CC58	2
VCC47	CC59	2
VCC48	CC60	2
VCC49	CC61	2
VCC50	CC62	2
VCC51	CC63	2
VCC52	CC64	2
VCC53	CC65	2
VCC54	CC66	2
VCC55	CC67	2
VCC56	CC68	2
VCC57	CC69	2
VCC58	CC70	2
VCC59	CC71	2
VCC60	CC72	2
VCC61	CC73	2
VCC62	CC74	2
VCC63	CC75	2
VCC64	CC76	2
VCC65	CC77	2
VCC66	CC78	2
VCC67	CC79	2
VCC68	CC80	2
VCC69	CC81	2
VCC70	CC82	2
VCC71	CC83	2
VCC72	CC84	2
VCC73	CC85	2
VCC74	CC86	2
VCC75	CC87	2
VCC76	CC88	2
VCC77	CC89	2
VCC78	CC90	2
VCC79	CC91	2
VCC80	CC92	2
VCC81	CC93	2
VCC82	CC94	2
VCC83	CC95	2
VCC84	CC96	2
VCC85	CC97	2
VCC86	CC98	2
VCC87	CC99	2
VCC88	CC100	2
VCC89	CC101	2
VCC90	CC102	2
VCC91	CC103	2
VCC92	CC104	2
VCC93	CC105	2
VCC94	CC106	2
VCC95	CC107	2
VCC96	CC108	2
VCC97	CC109	2
VCC98	CC110	2
VCC99	CC111	2
VCC100	CC112	2
VCC101	CC113	2
VCC102	CC114	2
VCC103	CC115	2
VCC104	CC116	2
VCC105	CC117	2
VCC106	CC118	2
VCC107	CC119	2
VCC108	CC120	2
VCC109	CC121	2
VCC110	CC122	2
VCC111	CC123	2
VCC112	CC124	2
VCC113	CC125	2
VCC114	CC126	2
VCC115	CC127	2
VCC116	CC128	2
VCC117	CC129	2
VCC118	CC130	2
VCC119	CC131	2
VCC120	CC132	2
VCC121	CC133	2
VCC122	CC134	2
VCC123	CC135	2
VCC124	CC136	2
VCC125	CC137	2
VCC126	CC138	2
VCC127	CC139	2
VCC128	CC140	2
VCC129	CC141	2
VCC130	CC142	2
VCC131	CC143	2
VCC132	CC144	2
VCC133	CC145	2
VCC134	CC146	2
VCC135	CC147	2
VCC136	CC148	2
VCC137	CC149	2
VCC138	CC150	2
VCC139	CC151	2
VCC140	CC152	2
VCC141	CC153	2
VCC142	CC154	2
VCC143	CC155	2
VCC144	CC156	2
VCC145	CC157	2
VCC146	CC158	2
VCC147	CC159	2
VCC148	CC160	2
VCC149	CC161	2
VCC150	CC162	2
VCC151	CC163	2
VCC152	CC164	2
VCC153	CC165	2
VCC154	CC166	2
VCC155	CC167	2
VCC156	CC168	2
VCC157	CC169	2
VCC158	CC170	2
VCC159	CC171	2
VCC160	CC172	2
VCC161	CC173	2
VCC162	CC174	2
VCC163	CC175	2
VCC164	CC176	2
VCC165	CC177	2
VCC166	CC178	2
VCC167	CC179	2
VCC168	CC180	2
VCC169	CC181	2
VCC170	CC182	2
VCC171	CC183	2
VCC172	CC184	2
VCC173	CC185	2
VCC174	CC186	2
VCC175	CC187	2
VCC176	CC188	2
VCC177	CC189	2
VCC178	CC190	2
VCC179	CC191	2
VCC180	CC192	2
VCC181	CC193	2
VCC182	CC194	2
VCC183	CC195	2
VCC184	CC196	2
VCC185	CC197	2
VCC186	CC198	2
VCC187	CC199	2
VCC188	CC200	2
VCC189	CC201	2
VCC190	CC202	2
VCC191	CC203	2
VCC192	CC204	2
VCC193	CC205	2
VCC194	CC206	2
VCC195	CC207	2
VCC196	CC208	2
VCC197	CC209	2
VCC198	CC210	2
VCC199	CC211	2
VCC200	CC212	2
VCC201	CC213	2
VCC202	CC214	2
VCC203	CC215	2
VCC204	CC216	2
VCC205	CC217	2
VCC206	CC218	2
VCC207	CC219	2
VCC208	CC220	2
VCC209	CC221	2
VCC210	CC222	2
VCC211	CC223	2
VCC212	CC224	2
VCC213	CC225	2
VCC214	CC226	2
VCC215	CC227	2
VCC216	CC228	2
VCC217	CC229	2
VCC218	CC230	2
VCC219	CC231	2
VCC220	CC232	2
VCC221	CC233	2
VCC222	CC234	2
VCC223	CC235	2
VCC224	CC236	2
VCC225	CC237	2
VCC226	CC238	2
VCC227	CC239	2
VCC228	CC240	2
VCC229	CC241	2
VCC230	CC242	2
VCC231	CC243	2
VCC232	CC244	2
VCC233	CC245	2
VCC234	CC246	2
VCC235	CC247	2
VCC236	CC248	2
VCC237	CC249	2
VCC238	CC250	2
VCC239	CC251	2
VCC240	CC252	2
VCC241	CC253	2
VCC242	CC254	2
VCC243	CC255	2
VCC244	CC256	2
VCC245	CC257	2
VCC246	CC258	2
VCC247	CC259	2
VCC248	CC260	2

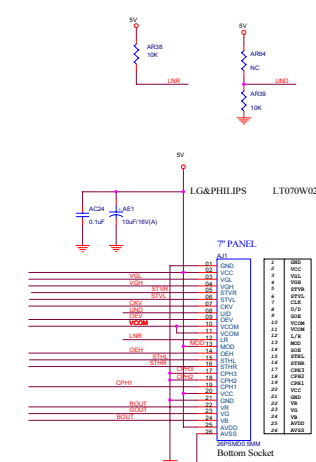
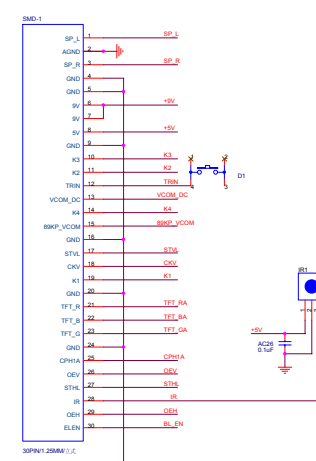
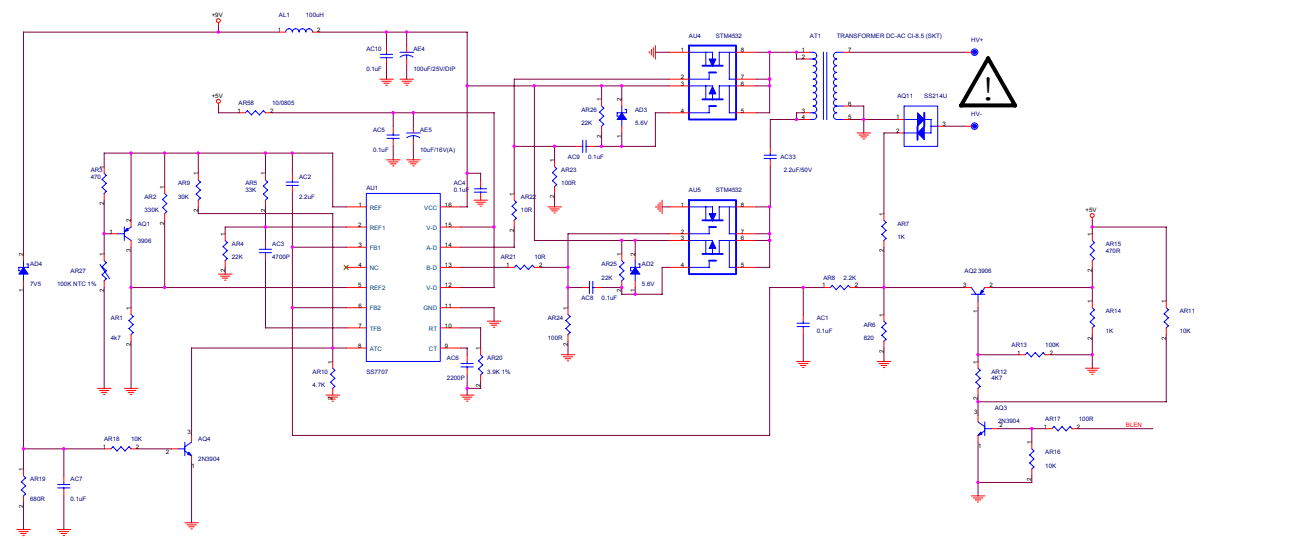


Panel Gate Driver Power

请尽量将Converter电路远离主电源和VCOM电路

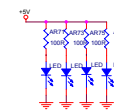
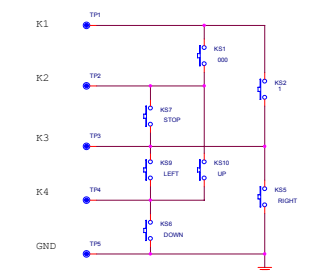


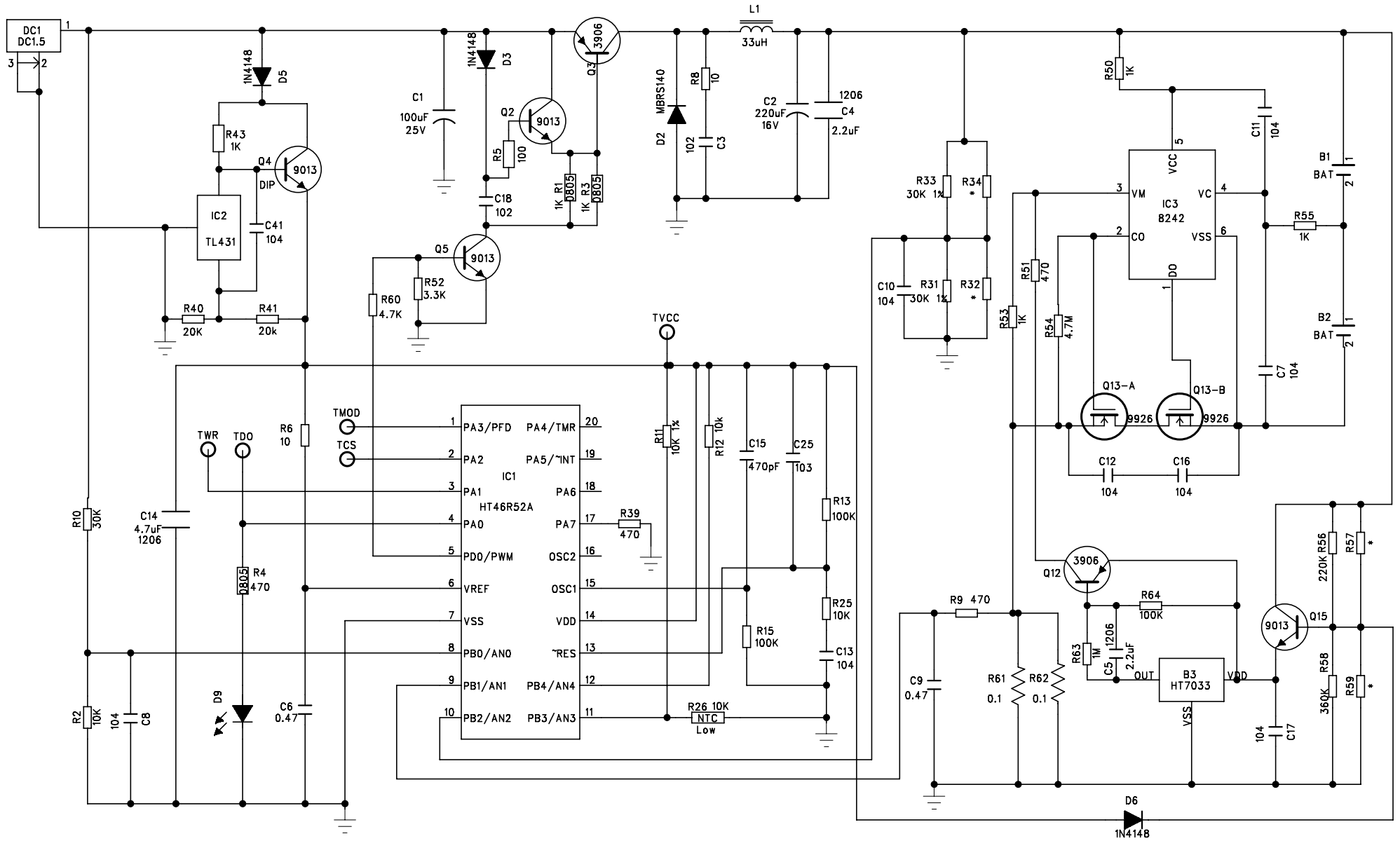
BJT Amplifier for T-CON L/F

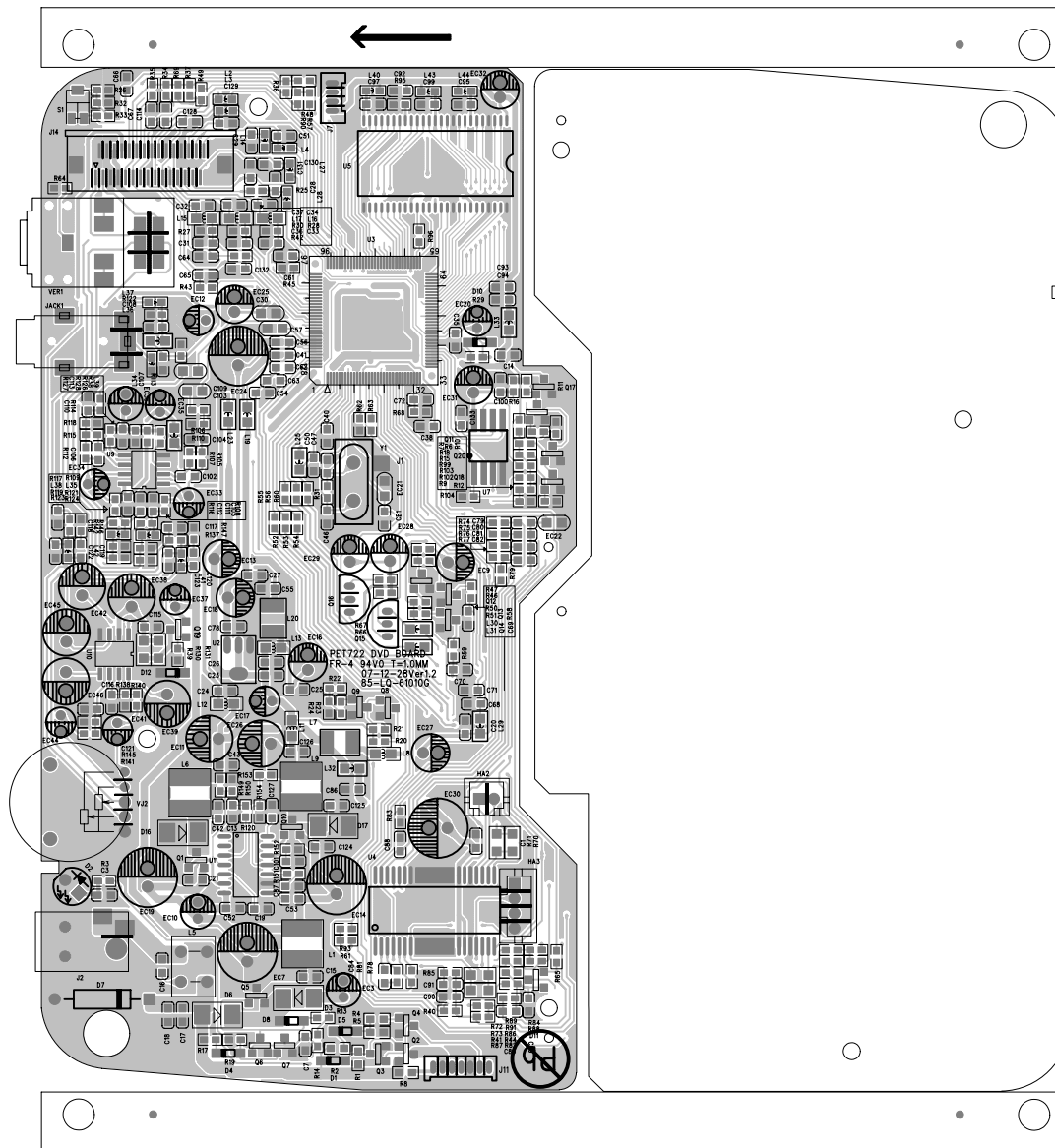


7" PANEL

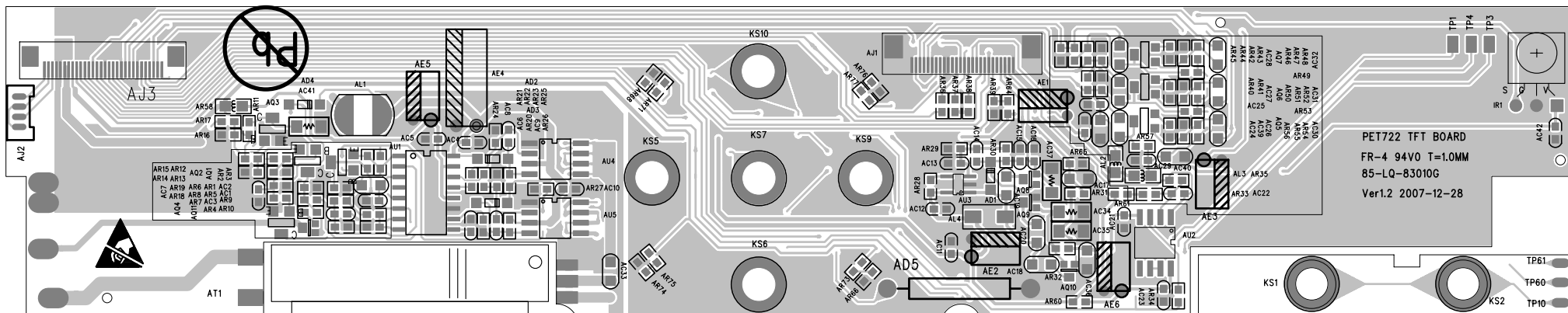
Bottom Socket





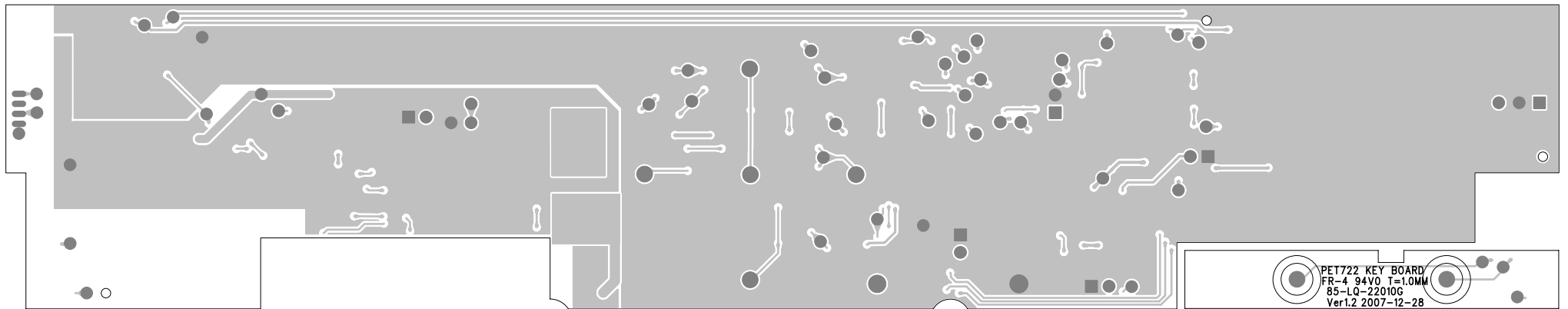


PET722 MAIN TOP

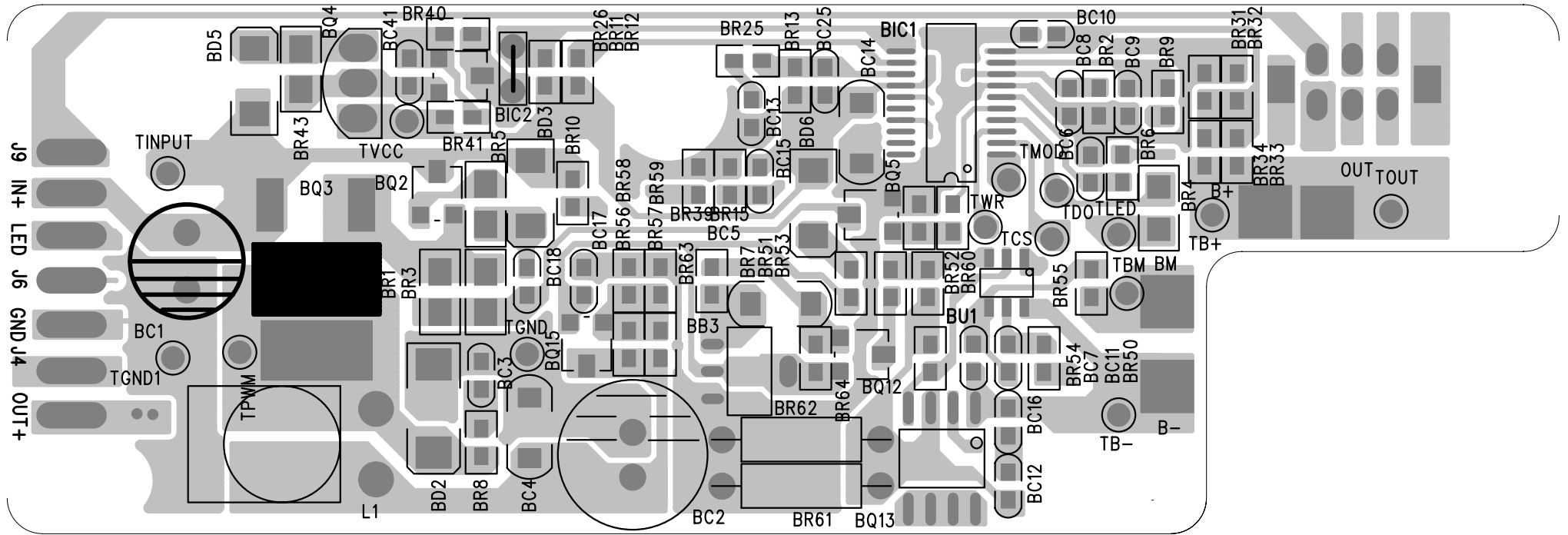


PET722 TFT BOARD
 FR-4 94V0 T=1.0MM
 85-LQ-83010G
 Ver1.2 2007-12-28

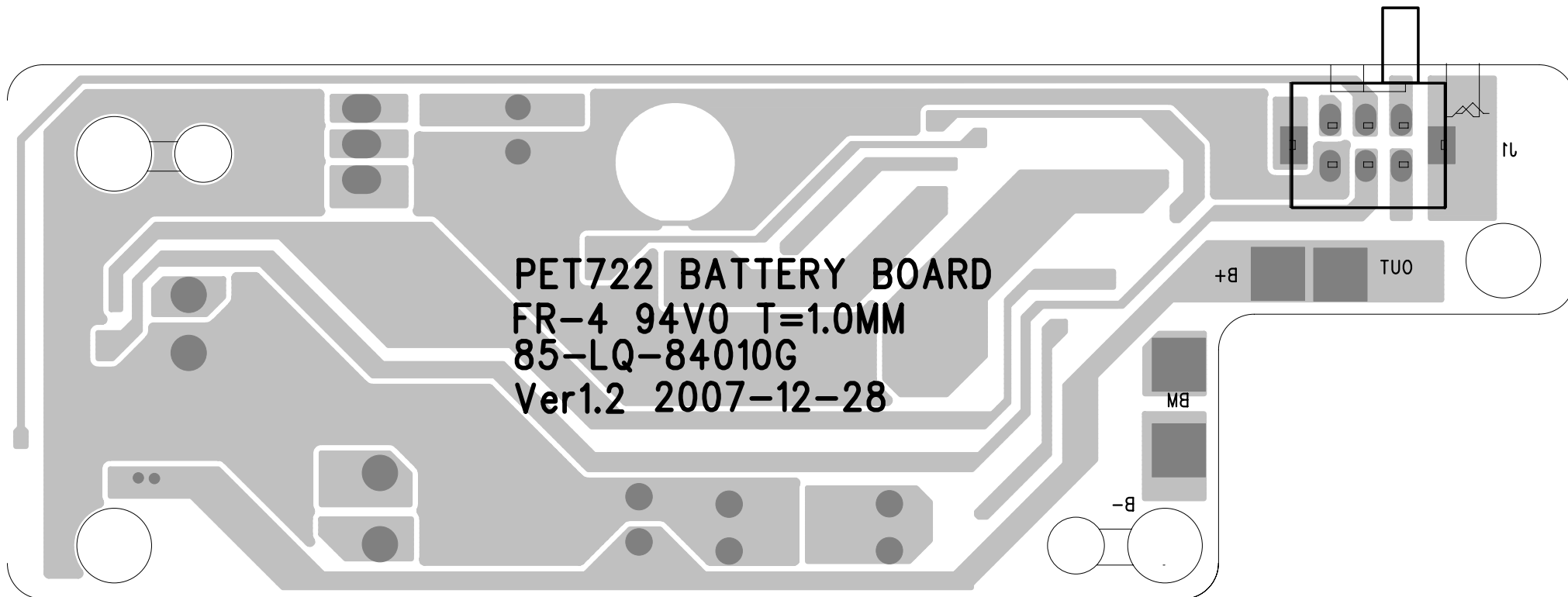
PET722 DRIVER TOP



PET722 DRIVER BOTTOM





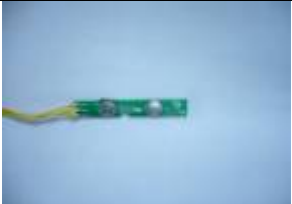


PET722 BATTERY TOP



PET722 BATTERY BOTTOM

8.0 SERVICE PART LIST

Electrical Part List:

CTN	Service 12NC	Service Description	Photo	Pos. No.
PET722/79 PET722/98 PET726/37	996510011223	MAIN PCBA		100
PET722/79 PET722/98 PET726/37	996510011210	TFT DRIVER PCBA		110
PET722/79 PET722/98 PET726/37	996510011211	BATTERY PCBA + BATTERY PACK		120
PET722/79 PET722/98 PET726/37	996510011212	KEY PCBA		130
PET722/79 PET722/98 PET726/37	996510002384	24PIN 130MM FFC		141
PET722/79 PET722/98 PET726/37	996510019998	30PIN 140MM FFC		142

8.0 SERVICE PART LIST

Mechanical Part List:

CTN	Service 12NC	Service Description	Photo	Pos. No.
PET722/79 PET722/98	996510009852	7" LCD PANEL		200
PET726/37	996510002360	7" LCD PANEL LG E2		
PET722/79 PET722/98 PET726/37	996510007686	DVD LOADER		210
PET722/79 PET722/98 PET726/37	996510011214	MONITOR TOP ASB + SPEAKERS		300
PET722/79 PET722/98 PET726/37	996510013820	MONITOR BOTTOM ASB		310
PET722/79 PET722/98 PET726/37	996510011216	DVD TOP ASB		320
PET722/79 PET722/98 PET726/37	996510011217	DVD BOTTOM ASB		330
PET722/79 PET722/98 PET726/37	996510011218	NAVIGATION BUTTON		340

8.0 SERVICE PART LIST

Mechanical Part List:

No.	Service 12NC	Service Description	Photo	Pos. No.
PET722/79 PET722/98 PET726/37	996510011219	OK BUTTON		350
PET722/79 PET722/98 PET726/37	996510011220	MENU BUTTON		360
PET722/79 PET722/98 PET726/37	996510015422	AV OUT/DVD BUTTON		370
PET722/79 PET722/98 PET726/37	996510011222	POWER BUTTON		380
PET722/79 PET722/98 PET726/37	996510011224	MONITOR LENS		390
PET722/79 PET722/98 PET726/37	996510011225	DVD LENS		400
PET722/79 PET722/98 PET726/37	996510011226	STAND PC		410
PET722/79 PET722/98 PET726/37	996510011227	STAND STEEL		420





8.0 SERVICE PART LIST

Mechanical Part List:

CTN	Service 12NC	Service Description	Photo	Pos. No.
PET722/79 PET722/98 PET726/37	996510011228	R STAND LOCK POM		430
PET722/79 PET722/98 PET726/37	996510011229	L STAND LOCK POM		440
PET722/79 PET722/98 PET726/37	996510011230	WHEEL POM		450
PET722/79 PET722/98 PET726/37	996510011231	PLATE SLIDE STEEL		460
PET722/79 PET722/98 PET726/37	996510011232	PLATE MICRO-NET		470
PET722/79 PET722/98 PET726/37	996510011233	HINGE STEEL		480

8.0 SERVICE PART LIST

Accessories Part List:

Service 12NC	Service Description	Photo	Pos. No.
996510006564	CAR ADAPTER		CARAPT
996510004972	REMOTE CONTROL		RC
996510004975	AV CABLE		AVCABLE
996510002353	AC/DC ADAPTER FOR EU (PET722/98)		ACAPT
996510005473	AC/DC ADAPTER FOR AUS/NZ (PET722/79)		ACAPT
996510010992	AC/DC ADAPTER FOR US (PET726/37)		ACAPT
996510019997	PAC132 2 nd SCREEN E2		PAC132

9.0 REVISION LIST

Version 1.0 (3141 785 32440)

- Initial release PET722/98

Version 1.1 (3141 785 32441)

- Add the part list for PET722/79

Version 1.2 (3141 785 32442)

- Add the part list for PET726/37